

APH: **568.5**

CDL: **8.768**

GPH: **637.4**

CertNo: **US7905**

BOAT

Class **C&C 99**
Designer **Tim Jacket**
Builder **C&C Yachts**
Age date **01/2006**
Series date **02/2002**
Offset file **C&C99.OFF**
Data file **USA79058**

HULL

Length Overall **9.885 m**
Maximum Beam **3.308 m**
Draft **1.642 m**
Displacement **4,584 kg**
DLR **6.4031**
IMS Division **Cruiser/Racer**
Dynamic Allowance **0.050%**
Age Allowance **0.487%**

PROPELLER

Installation **Strut**
Type **Folding 2 blades**
Diameter **0.406m**

CREW

Maximum weight **635 kg**
Minimum weight **476 kg * when applied**
Non Manual Power **No**
Crew Arm Extension

SAIL AREAS (m²)

	Measured	Rated
Mainsail	29.19	29.67
Headsail Luffed	41.60	41.60
Headsail Flying		
Symmetric	91.71	91.71
Asymmetric	87.38	87.38

(All asymmetric spinnakers with SHW/SFL > 85%)

STORM SAIL AREAS (m²)

Trysail **8.59**
Storm Jib **10.31**
Heavy Weather Jib **27.82**

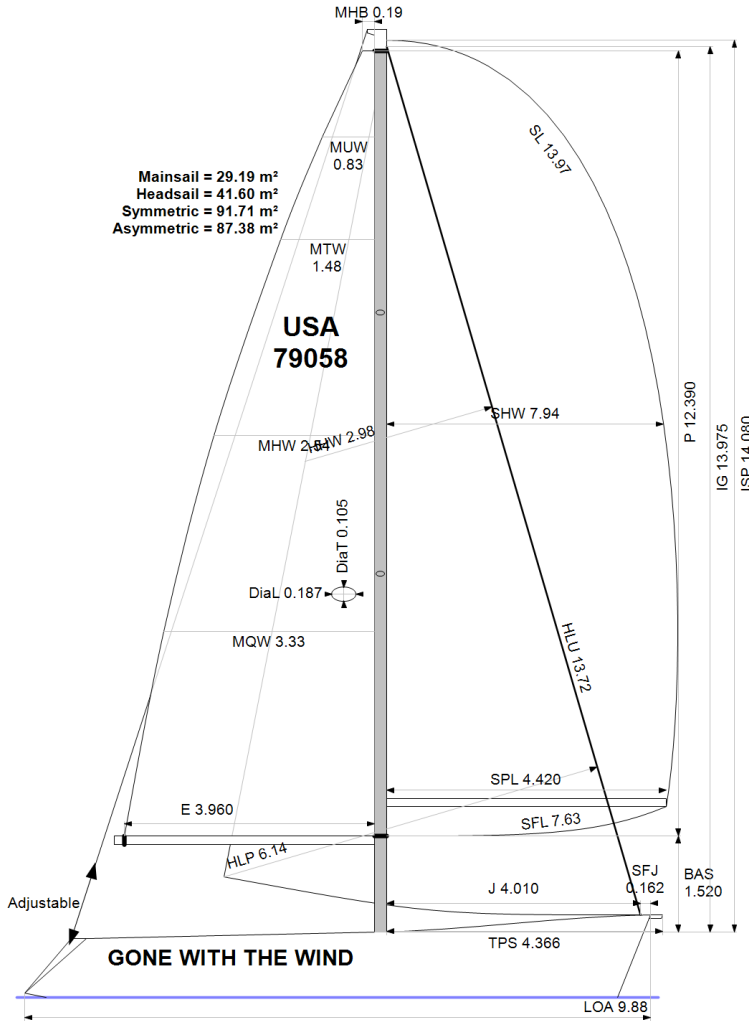
SAIL LIMITS

Headsails **5**
Spinnakers **4 * Asymmetric SHALL NOT be tacked on the pole**

STABILITY

Righting Moment **N/A**
Stability Index **N/A**

The owner and any other person in charge is responsible that boat is complying with her certificate in accordance with RRS 78.1 and ORC Rule 304.



Mainsail = 29.19 m²
Headsail = 41.60 m²
Symmetric = 91.71 m²
Asymmetric = 87.38 m²

Rated boat velocities in knots

Wind Velocity	6 kt	8 kt	10 kt	12 kt	14 kt	16 kt	20 kt
Beat Angles	44.2°	42.3°	40.6°	39.3°	38.4°	38.4°	38.6°
Beat VMG	3.43	4.14	4.65	4.93	5.05	5.12	5.15
52°	5.26	6.18	6.71	6.98	7.10	7.17	7.23
60°	5.55	6.41	6.87	7.13	7.29	7.37	7.46
75°	5.73	6.55	6.99	7.28	7.51	7.69	7.87
90°	5.61	6.49	7.02	7.35	7.57	7.82	8.22
110°	5.47	6.55	7.14	7.55	7.92	8.25	8.71
120°	5.32	6.42	7.06	7.50	7.91	8.31	9.15
135°	4.83	5.96	6.75	7.24	7.66	8.07	9.00
150°	4.08	5.19	6.13	6.81	7.25	7.64	8.43
Run VMG	3.54	4.50	5.32	6.02	6.60	7.06	7.78
Gybe Angles	145.1°	149.6°	152.3°	158.6°	171.8°	177.2°	178.4°



Time Allowances in secs/NM							
Wind Velocity	6 kt	8 kt	10 kt	12 kt	14 kt	16 kt	20 kt
Beat VMG	1049.6	870.4	774.2	729.8	712.5	703.6	699.0
52°	684.7	582.3	536.4	515.8	506.9	502.0	497.9
60°	648.2	561.3	523.9	504.7	493.8	488.2	482.7
75°	628.4	549.9	515.1	494.7	479.3	468.3	457.5
90°	641.5	554.8	513.0	490.1	475.4	460.1	437.8
110°	658.1	549.5	504.2	476.7	454.5	436.6	413.4
120°	677.2	561.0	509.6	479.8	455.0	433.1	393.5
135°	745.4	603.8	533.2	497.4	470.2	445.9	400.1
150°	881.3	693.1	587.4	528.5	496.6	471.4	427.3
Run VMG	1017.7	800.4	676.9	598.3	545.9	510.1	462.6
Selected Courses							
Windward / Leeward	1033.7	835.4	725.5	664.0	629.2	606.9	580.8
All purpose	796.6	658.3	587.4	549.0	526.5	510.3	487.6

Single Number Scoring Options		
Course	Time On Distance	Time On Time
Windward / Leeward	695.1	0.8632
All purpose	568.5	1.0553

Custom scoring options for United States of America

Scoring Option	Time On Distance	Time On Time
Triple Number All Purpose Low	727.4	0.8248
Triple Number All Purpose Medium	565.3	1.0614
Triple Number All Purpose High	505.8	1.1862
Triple Number Windward/Leeward Low	934.6	0.6420
Triple Number Windward/Leeward Medium	690.1	0.8694
Triple Number Windward/Leeward High	602.7	0.9956
Predominantly Upwind	613.4	0.9782
Predominantly Downwind	577.9	1.0382
Predominantly Upwind Low	806.6	0.7438
Predominantly Upwind Medium	631.7	0.9497
Predominantly Upwind High	590.5	1.0161
Predominantly Downwind Low	795.0	0.7547
Predominantly Downwind Medium	573.6	1.0461
Predominantly Downwind High	479.6	1.2511
Chicago-Mac Upwind		0.9611
Chicago-Mac All Purpose		0.9874
Chicago-Mac Downwind		1.0204
Bayview-Mac Cove Island		0.9196
Bayview-Mac Shore		0.9283
Harvest Moon Regatta	495.7	1.2103

Scoring Option	Time On Distance	Time On Time
San Francisco Bay Heavy	591.6	1.0143
San Francisco Bay Medium	684.4	0.8767
Predominantly Reaching	542.4	1.1063
Predominantly Reaching Low	659.9	0.9092
Predominantly Reaching Medium	537.7	1.1159
Predominantly Reaching High	475.3	1.2624
Windward/Leeward 60-40 Low	939.6	0.6386
Windward/Leeward 60-40 Medium	711.2	0.8436
Windward/Leeward 60-40 High	637.2	0.9416

5-Band Windward/Leeward	Time On Distance	Time On Time
5-Band Low	1018.4	0.5892
5-Band Low / Medium	854.4	0.7022
5-Band Medium	678.0	0.8850
5-Band Medium / High	611.0	0.9819
5-Band High	585.3	1.0251



Data in meters/kilograms (Metric)

HULL AND APPENDAGES (Lightship Trim)

Class	C&C 99	LOA	9.885	VCGD	-0.038
Measurement		Max. Beam	3.308	VCGM	-0.036
HIN		Draft	1.642	RM Rated (kg-m)	129.5
Plan review		Displacement	4,584	Limit of positive stability(°)	N/A
Hull construction	Cored	Wetted area	23.46	Stability Index	N/A
Carbon Rudder	No	IMS L	9.162		
Light stanchions	No	LSM0	8.945		
Trim tab	No	Acc. length	9.885		
		Sink (kg/mm)	18.23		

PROPELLER

Propeller Type	Folding 2 blades				
Installation	Strut	PRD	0.406	EDL	1.370
Twin screw	No	PBW	0.110	ST1	0.039
Hydro generator	No	PIPA	0.0029	ST2	0.171
				ST3	0.171
				ST4	0.096
				ST5	0.290

RIG

Forestay tension	Aft	P	12.390	E	3.960
Inner stay	None Fitted	IG	13.975	J	4.010
Carbon mast	Yes	ISP	14.080	BAS	1.520
Headsail furler	No	MDT1	0.105	FSD	0.030
Mainsail furler	No	MDL1	0.187	SFJ	0.162
Articulated bowsprit	No	MDT2	0.105	SPL	4.420
Non-circular rigging	No	MDL2	0.187	WPL	
Fiber rigging	No	TL	0.000	TPS	4.366
Runners/Checkstays	0	MW	0.187	BD	0.140
Spreaders	2	GO	0.293	MWT	138.00
Rotating mast	No			MCG	4.600

FLOTATION AND STABILITY

Calculation method	RM entered directly	SFFP	0.320	SAFP	8.909
RM entered	129.3	FFM		FAM	
Flotation Date	25/04/2023	FF	1.285	FA	0.869
Measurer		LCFcl	5.604	LCFsh	5.839
Comment		SG	1.0190	HBI	1.030

INVENTORY

TANKS	Id	Description	Sp.Wght	Capacity	Condition	LCG	VCG
	2	Water SS Stbd settee		151	0	5.30	0.00
	1	Fuel SS Port settee	Fuel	76	0	5.30	0.00
			<i>Total deductible</i>		0		
OTHER ITEMS	Id	Kind Description		Weight		LCG	VCG
	1	Engine Volvo SD-20					
			<i>Total deductible</i>				



Club
Certificate
2023

Boat
GONE WITH THE WIND
USA 79058

US SAILING
1 ROGER WILLIAMS UNI WAY
BRISTOL, RI 02809
USA



MAINSAIL

<i>Id</i>	<i>MHB</i>	<i>MUW</i>	<i>MTW</i>	<i>MHW</i>	<i>MQW</i>	<i>Area</i>	<i>Meas.Date</i>	<i>Comment</i>
Main	0.19	0.83	1.48	2.54	3.33	29.19		

HEADSAIL

<i>Id</i>	<i>HHB</i>	<i>HUW</i>	<i>HTW</i>	<i>HHW</i>	<i>HQW</i>	<i>HLP</i>	<i>HLU</i>	<i>Btn</i>	<i>Flying FT</i>	<i>Area</i>	<i>Meas.Date</i>	<i>Comment</i>
Genoa	0.09	0.79	1.50	2.98	4.52	6.14	13.72	No	No	41.60		

SYMMETRIC SPINNAKER

<i>Id</i>	<i>SLU</i>	<i>SLE</i>	<i>SL</i>	<i>SHW</i>	<i>SFL</i>	<i>Area</i>	<i>Meas.Date</i>	<i>Comment</i>
S2	13.97	13.97	13.97	7.94	7.63	91.71		

ASYMMETRIC SPINNAKER

<i>Id</i>	<i>SLU</i>	<i>SLE</i>	<i>SL</i>	<i>SHW</i>	<i>SFL</i>	<i>Ratio</i>	<i>Area</i>	<i>Meas.Date</i>	<i>Comment</i>
A2	14.47	14.00	14.24	7.29	7.67	95%	87.38		